

INDIAN INSTITUTE OF TECHNOLOGY BOMBAY
Office of Dean (IPS)

INFORMATION REGARDING NEW B TYPE BUILDING

Dear All,

We are pleased to inform that it has been decided to build a residential multi-storeyed (high-rise) building comprising of 78 Flats of Type 'B'. The location of proposed tower is near old BTR building behind State Bank / Main Gate.

The preliminary architectural layouts for the building have been finalised after detailed deliberations/ discussions between IITB Task Force and the Architects M/s Somaya & Kalappa Mumbai, and sign off of the drawings has taken place on 26-08-2016.

The proposed building consists of stilt + 20 storeys, with 19 floors having 4 flats each and one floor having 2 flats and refuge area equivalent to 2 flats, Stilt area covers space for 16 cars and there is provision for 64 cars as open parking.

Each flat comprises of (i) Living room (ii) three Bedrooms (iii) Guest Room, (iv) kitchen (v) attached toilets for two bed rooms, (vi) and separate (common) bath & toilet. The attached balcony of Master Bed room presents different directional feature (location wise) in alternate floors. The Carpet area of each flat is 1341 Sq feet and 1370 Sq feet in odd and even floors respectively.

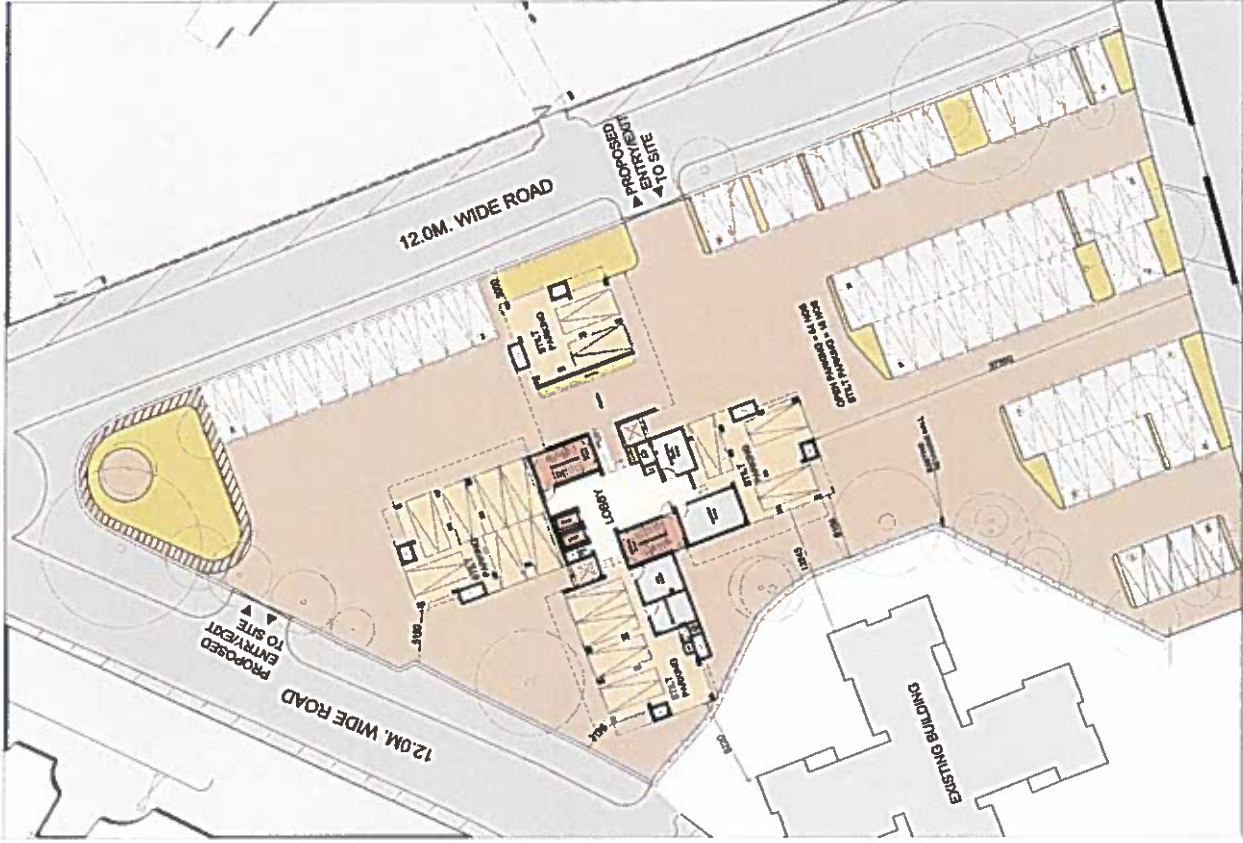
The following sketch plans (6 Nos) are uploaded for information:

- i) Drawing No.1:- Location Plan
- ii) Drawing No.2:-Ground Stilt Level Plan
- iii) Drawing No.3:-Apartment Layout- Odd Floors
- iv) Drawing No.4:-Apartment Layout- Even Floors
- iv) Drawing No.5:-Interior Layout- view (Perspective)
- v) Drawing No.6:- Elevation (Presenting- Alternative Balcony location) in alternate floors

The edge of the building nearest to main road (Adisankaracharya Road) is about 40 ft away from MMRDA wall.

Dean (IPS)

GROUND FLOOR MASTER PLAN



BUILDING-'A' TYPE-B, APARTMENT HOUSING

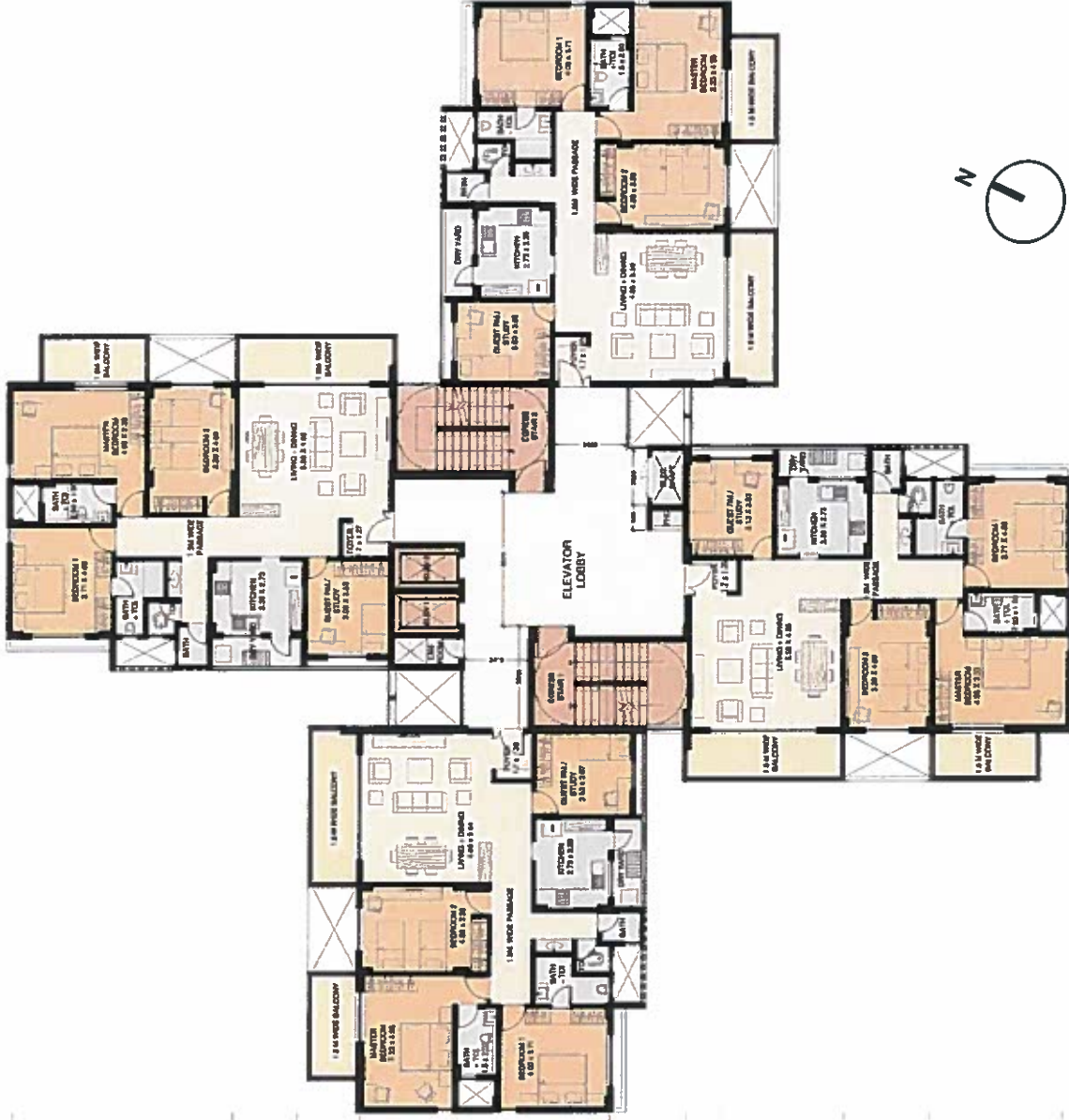
GROUND STILT LEVEL PLAN



- PARKING**
- UTILITIES**
- SERVICES (STAIRS, ETC.)**
- CORE**

BUILDING-'A' TYPE-B, APARTMENT HOUSING

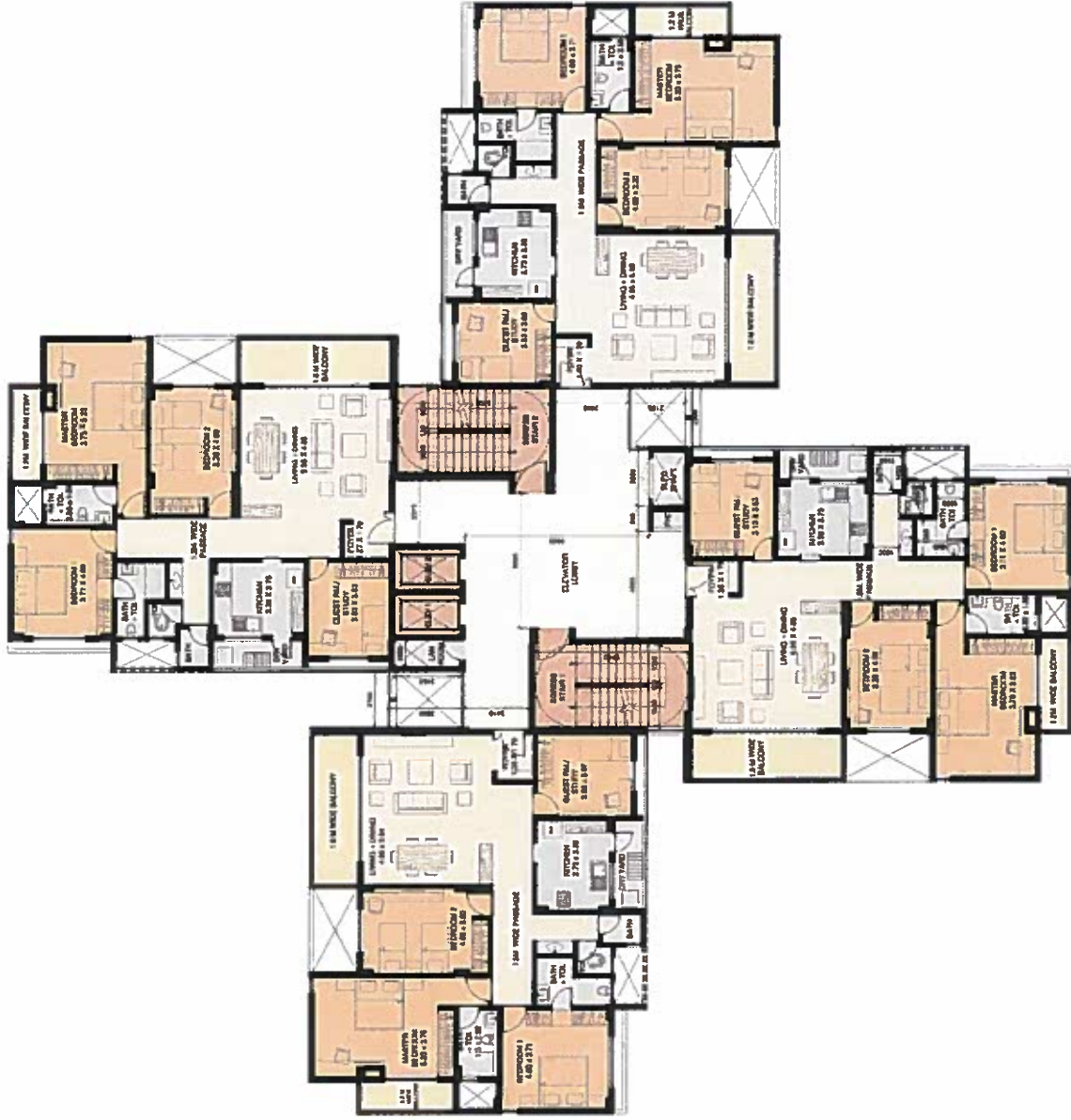
TYPICAL APARTMENT LAYOUT- ODD FLOORS



- FAMILY AREAS
- ROOMS
- BALCONY
- UTILITIES
- SERVICES
- CORE

BUILDING-'A' TYPE-B, APARTMENT HOUSING

TYPICAL APARTMENT LAYOUT- EVEN FLOORS



- FAMILY AREAS
- ROOMS
- BALCONY
- UTILITIES
- SERVICES
- CORE

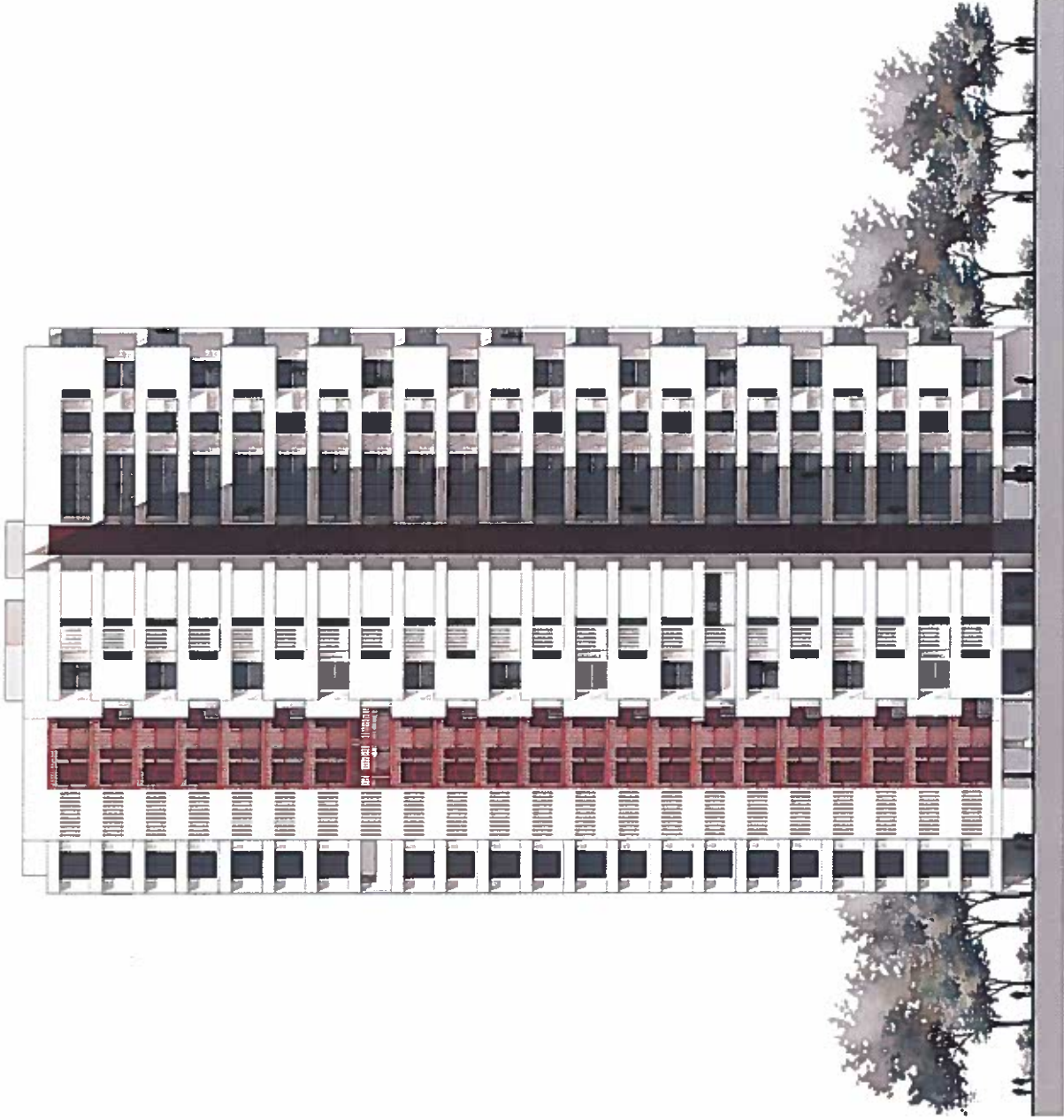
BUILDING-'A' TYPE-B, APARTMENT HOUSING

TYPICAL APARTMENT - INTERIOR LAYOUT VIEW



BUILDING-'A' TYPE-B, APARTMENT HOUSING

ELEVATION



KEY PLAN

BUILDING-'A' TYPE-B, APARTMENT HOUSING